

- Low-loss RF SAW filter for mobile systems
- Low amplitude ripple
- No matching network required for operation at 50Ω
- Ceramic package for Surface Mounted Technology (SMT)
- Lead-free production and RoHS compliant

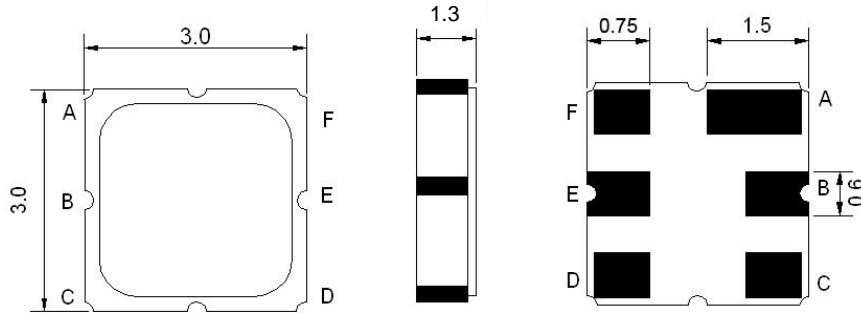


Electrical Characteristics

MAXIMUM RATING				
PARAMETERS DESCRIPTION	UNIT	MINIMUM	TYPICAL	MAXIMUM
Operating Temperature Range	°C	-40	-	+85
Storage Temperature Range	°C	-40	-	+85
Maximum DC Voltage	V _{DC}	-	-	0
Maximum Input Power Level	dBm	-	-	10
Source Impedance	Ω	-	50	-
Load Impedance	Ω	-	50	-
Length x Width	mm ²	-	3.0 x 3.0	-
Height	mm	-	-	1.3

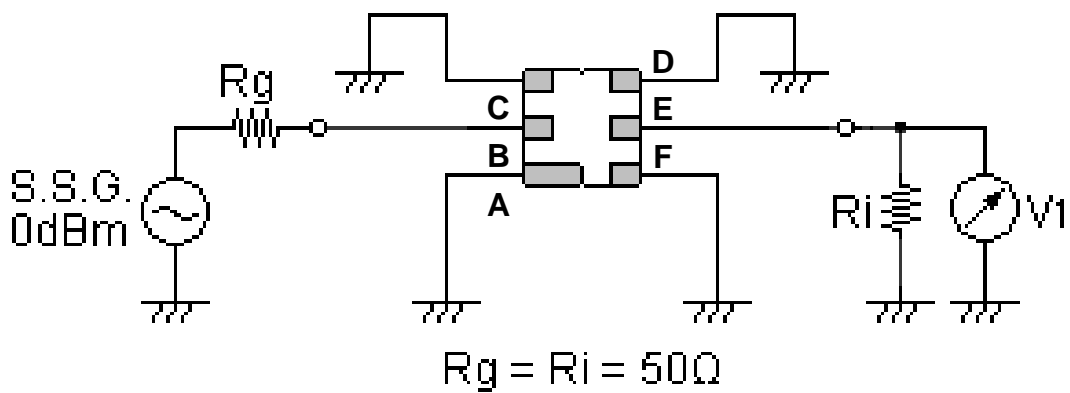
ELECTRICAL SPECIFICATION				
PARAMETERS DESCRIPTION	UNIT	MINIMUM	TYPICAL	MAXIMUM
Center Frequency (F _o)	MHz	-	780.5	-
Insertion Loss @ 758.00 ~ 803.00MHz	dB		2.4	3.0
Amplitude Ripple (p-p) @ 758.00 ~ 803.00MHz	dB		1.0	1.5
Group Delay Ripple @ 758.00 ~ 803.00MHz	nS		5	20
Absolute Attenuation:				
DC ~ 680.00 MHz	dB	23	26	
680.00 ~ 710.00 MHz	dB	23	26	
890.00 ~ 930.00 MHz	dB	29	35	
1630.00 ~ 1680.00 MHz	dB	35	40	
1680.00 ~ 2000.00 MHz	dB	30	35	
2000.00 ~ 3000.00 MHz	dB	20	30	
Input / Output VSWR @ 758.00 ~ 803.00MHz	dB		1.8:1	2.2:1

Package Dimensions



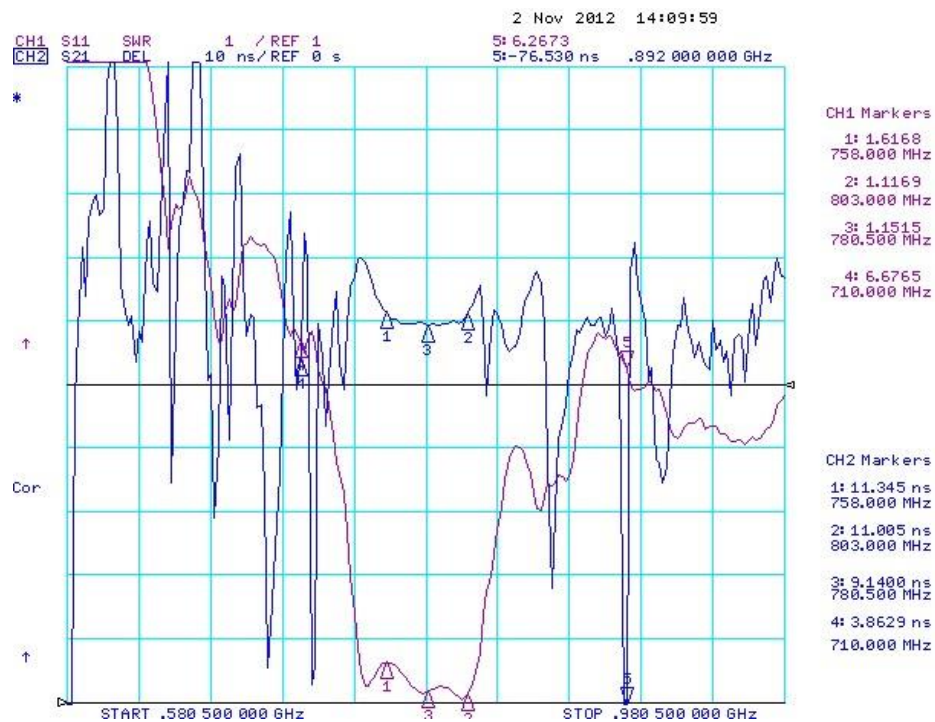
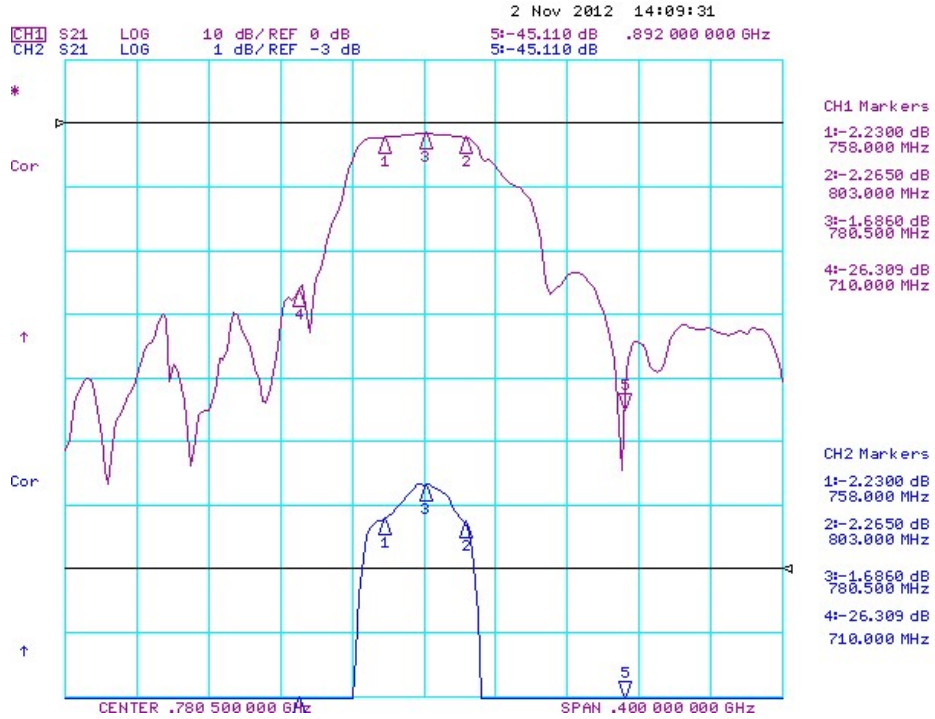
Pin Description	
B	Input
E	Output
A, C, D, F	Ground

Testing Environment



Frequency Characteristics

Frequency Response



Frequency Response

